



Gillette Stadium Event Facility

Installation

2009

Location

One Patriot Place
Foxborough, MA 02035-1388

Materials

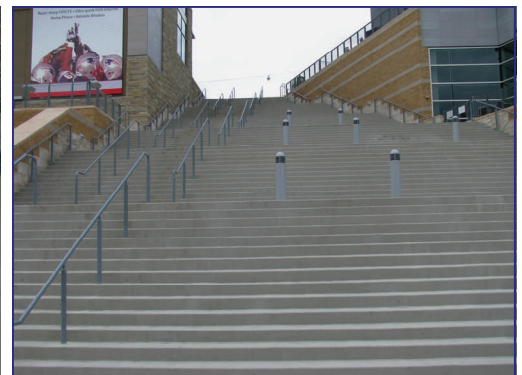
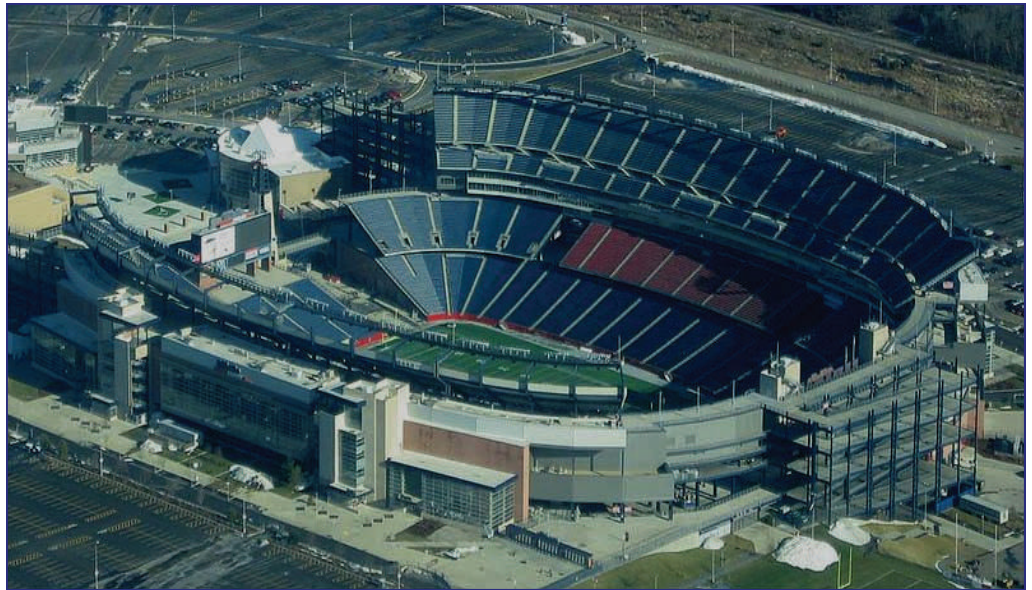
SC-111 Pedestrian Grade
Membrane System

Resicolor #4 Color Topping

Contractor

Debrino Caulking Associates
1304 Route 9
Castleton, NY 12033

In early 2006, the Patriots of Gillette Stadium and Kraft Sports Group built the “super regional lifestyle and entertainment center” and named this area around the stadium Patriot Place. The owner decided to coat the grand staircase leading from the plaza to the stadium entrance. The Strongcote Pedestrian Grade Traffic Coating with the addition of a Resicolor #4 Color Topping were selected. These materials provided the project with a slip resistant, breathable, Zero VOC system that will extend the concrete life of this installation.



Strongwall Industries, Inc. 107 Chestnut Street, Ridgewood, NJ 07450 **Website:** www.strongwall.com
Office: 201-445-4633 ♦ **Fax:** 201-447-2317 ♦ **Email:** strongwall@strongwall.com